

Bead & Button Show 2010

Diane Fitzgerald presents...

More Shaped Beadwork (B10607)

Date/Time: Sun./Tues. June 5-8, 2010 - 9 -5:30 - Location: Hyatt Lakeshore A

Dear Students:

Class Fee: \$585

I'd like to encourage you to work on the project that appeals to you the most, so take a look at the images on these pages and bring beads to work on whichever you'd like. After you have registered for the class, I'd be happy to give additional information about supplies if you need it. You can begin several projects or you can focus on one. A three-day class gives us the time to develop our ideas and execute them. If you have a shapes idea of your own that you would like to work on but aren't sure how to tackle it, this is the class to take.

Three days jam-packed with shapes to spark your creativity: new three-dimensional shapes such as the cornerless cube, rhombo bead, the icosahedron and bumpy balls which can be used as beads or pendants; shapes sparkling with crystals like geodes; shapes with colorful intricate patterns; turn pointed ovals into elaborate pods for a pendant and make perfect bezels for rivolis and other shapes. Learn how color affects these patterns and see how shapes can be used in interpretations of ethnic adornment. Detailed patterns for the Moorish Tile beads shown will be provided. Students should know how to make a triangle, square, pentagon and hexagon with circular peyote stitch.

Supplies to bring:

-An assortment of Delica size 11 beads in 7-10 colors, 5-10 grams of each color in light, medium, dark and metallic

-Fireline 6lb

-Nymo D or One G thread

-Microcrystalline wax

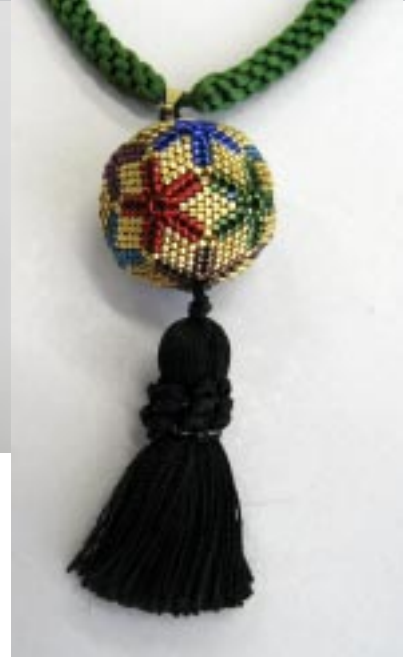
-Size 10 beading needles

- (optional) 3mm, 4mm and 6mm crystals



Diane Fitzgerald - Beautiful Beads - 115 Hennepin Ave. - Minneapolis, MN 55401 - 612-333-0170
Email: dmfbeads@bitstream.net; website: www.dianefitzgerald.com

© 2009. This material may not be reproduced in whole or in part by any means without written permission of the author.



This page: Various Temari Ball Beaded Bead Patterns;
upper right: triangles with crystal centers
Next page: clockwise from upper left: Marde Gras Beads,
Rhombic Bead, Blue Nova Star, Pod Bauble, Open Icosa
Ball, Eye and Triangle Pendant

Diane Fitzgerald - Beautiful Beads - 115 Hennepin Ave. - Minneapolis, MN 55401 - 612-333-0170
Email: dmbfbeads@bitstream.net; website: www.dianefitzgerald.com

© 2009. This material may not be reproduced in whole or in part by any means without written permission of the author.



Diane Fitzgerald - Beautiful Beads - 115 Hennepin Ave. - Minneapolis, MN 55401 - 612-333-0170
Email: dmfbeads@bitstream.net; website: www.dianefitzgerald.com
© 2009. This material may not be reproduced in whole or in part by any means without written permission of the author.

Bead & Button Show 2010

Diane Fitzgerald presents...

Crystallized™ Presents:

African Circle Stitch Necklace (B10122)

Date/Time: Wed. June 9, 2010 AM - 8:00 - 11:00 - Location: Hyatt Lakeshore A

Don't be fooled! This necklace is NOT right-angle weave! It was derived from a century-old piece of Zulu beadwork found in a museum in southern England. It creates a lovely fabric of beads which can be worked all in one color, with patterns or with reversed seed beads and crystals. It is easy to learn and with a three-hour class with **5 gross** of crystals provided by Crystallized Swarovski Elements, a real bargain! (Intermediate class)



Supplies to bring:

Size 10 or 12 beading needles, Microcrystalline wax,
Scissors, Fireline 6lb smoke

Diane Fitzgerald - Beautiful Beads - 115 Hennepin Ave. - Minneapolis, MN 55401 - 612-333-0170
Email: dmfbeads@bitstream.net; website: www.dianefitzgerald.com

© 2009. This material may not be reproduced in whole or in part by any means without written permission of the author.

CREATE
YOUR STYLE with
CRYSTALLIZED™
- Swarovski Elements

Bead & Button Show 2010

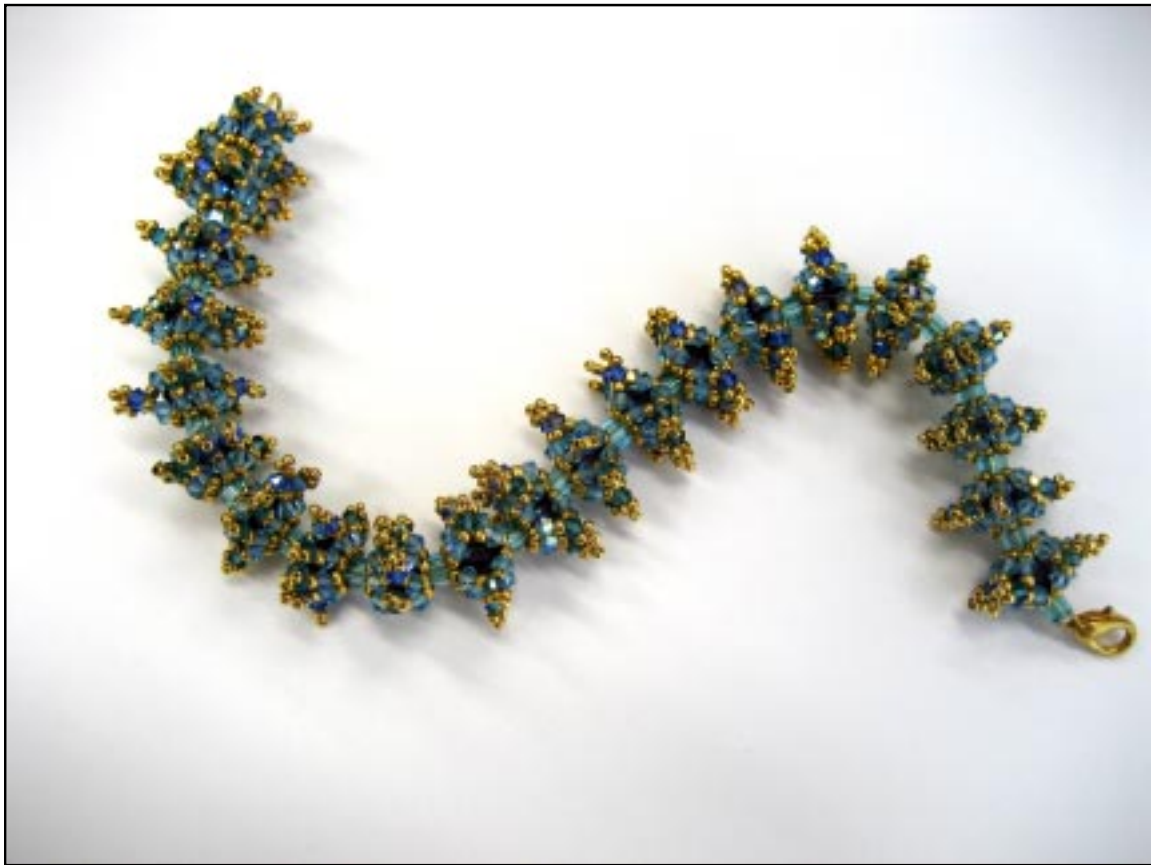
Diane Fitzgerald and Crystallized™ Swarovski Elements present...

Flowerette Braclet (B10129)

Date/Time: Wed. June 9, 2010 PM- 12:00 - 3:00pm - Location: Hyatt Lakeshore A

As shown on the cover of the B&B 2010 Show catalog, the Flowerette Bracelet is easy to learn and brings raves of compliments. As a three-hour class with crystals provided by Crystallized Swarovski Elements, its a real bargain! (Intermediate class)

Class Fee: \$92



Supplies to bring:

Size 10 or 12 beading needles, microcrystalline wax, scissors, Fireline 6lb smoke or crystal

CREATE
YOUR STYLE with
CRYSTALLIZED™
- Swarovski Elements

Diane Fitzgerald - Beautiful Beads - 115 Hennepin Ave. - Minneapolis, MN 55401 - 612-333-0170
Email: dmfbeads@bitstream.net; website: www.dianefitzgerald.com

© 2009. This material may not be reproduced in whole or in part by any means without written permission of the author.

Bead & Button Show 2010

Diane Fitzgerald and Crystallized™ Swarovski Elements present...

Crystal Helix Necklace (B10128)

Date/Time: Thurs. June 10, 2010 AM- 8:00 - 11:00am - Location: Hyatt Lakeshore A

You'll feel elegant anytime you wear this necklace as it sparkles at your neckline. The technique is another of the typical Zulu stitches but is not netting. As a three-hour class with **5 gross** of crystals provided by Crystallized Swarovski Elements, its a real bargain! (Intermediate class) Class Fee: \$95



Supplies to bring:

Size 10 or 12 beading needles, Microcrystalline wax, Scissors, Fireline 6lb smoke or crystal

CREATE
YOUR STYLE with
CRYSTALLIZED™
- Swarovski Elements

Diane Fitzgerald - Beautiful Beads - 115 Hennepin Ave. - Minneapolis, MN 55401 - 612-333-0170
Email: dmfbeads@bitstream.net; website: www.dianefitzgerald.com

© 2009. This material may not be reproduced in whole or in part by any means without written permission of the author.

Bead & Button Show 2010

Diane Fitzgerald presents...

Sea Urchin Necklace (B10127)

Date/Time: Thurs. June 10, 2010 PM- 12:00 - 3:00pm - Location: Hyatt Lakeshore A

This necklace of spiky shapes resembling sea urchins or flowers is sure to bring compliments. Learn to create a template using foam core board, then to use the template to create a shaped base out of cord, assemble the "sea urchins" and to attach them. As a three-hour class, its a real bargain! (Intermediate class)

Class Fee: \$130



Kits will be available in several colors but not every color will be available for all students. To be fair, we'll draw numbers to select kits.

Supplies to bring:

Size 10 or 12 beading needles, microcrystalline wax,
Nymo D thread, scissors,

See more samples>>>>

Diane Fitzgerald - Beautiful Beads - 115 Hennepin Ave. - Minneapolis, MN 55401 - 612-333-0170

Email: dmfbeads@bitstream.net; website: www.dianefitzgerald.com

© 2009. This material may not be reproduced in whole or in part by any means without written permission of the author.

**Sea Urchin Necklace
by Diane Fitzgerald**



Diane Fitzgerald - Beautiful Beads - 115 Hennepin Ave. - Minneapolis, MN 55401 - 612-333-0170
Email: dmbbeads@bitstream.net; website: www.dianefitzgerald.com
© 2009. This material may not be reproduced in whole or in part by any means without written permission of the author.

Bead & Button Show 2010

Diane Fitzgerald and MIYUKI Co. present...

Radiance Pin/Pendant (B10123)

Date/Time: Fri. June 11, 2010 - 8:30 - 4:00pm - Location: Hyatt Lakeshore A

Inspired by the seduction of a fan and coupled with a diamond shape this pendant creates a striking image. With peyote stitch students will learn to create these shapes and assemble them into a pendant or pin. Use these basic shapes to create other jewelry such as earrings, beaded beads and more. With beads provided by MIYUKI Co., its a real bargain! (Intermediate class)

Class Fee: \$155



Supplies to bring:

Size 10 or 12 beading needles, microcrystalline wax, scissors, task lamp and work surface.

Diane Fitzgerald - Beautiful Beads - 115 Hennepin Ave. - Minneapolis, MN 55401 - 612-333-0170
Email: dmfbeads@bitstream.net; website: www.dianefitzgerald.com

© 2009. This material may not be reproduced in whole or in part by any means without written permission of the author.

Bead & Button Show 2010

Diane Fitzgerald and MIYUKI Co. present...

Ginkgo Leaf Necklace (B10126)

Date/Time: Sat. June 12, 2010 PM- 9:00 - 5:00pm - Location: Hyatt Lakeshore A

This classic necklace is a design I've taught since 1996--around the world and at every Bead & Button Show! The class is valuable because you will learn color blending as you create the graceful ginkgo leaf shape using brick stitch. This time MIYUKI Co. will provide the beads making it a real winner!

Class Fee:\$155



Supplies to bring:

Size 10 beading needles, scissors, task lamp and work surface.

Diane Fitzgerald - Beautiful Beads - 115 Hennepin Ave. - Minneapolis, MN 55401 - 612-333-0170
Email: dmfbeads@bitstream.net; website: www.dianefitzgerald.com

© 2009. This material may not be reproduced in whole or in part by any means without written permission of the author.

Bead & Button Show 2010

Diane Fitzgerald presents...

Gypsy Fortune Teller Beads (B10124)

Date/Time: Sun. June 13, 2010 AM- 9:00 - 12:00 noon - Location: Hyatt Lakeshore A

Imagine the soft glow of a candle in a lantern covered with sparkling beads as the fortune teller begins her story. Charlotte beads, bicone crystals and resin balls combine to result in a unique netting covered bead (Bead colors may vary).

Class Fee: \$110



Supplies to bring:

Size 10 or 12 beading needles, Microcrystalline wax, Scissors and Fireline 6lb smoke; optional: 8mm round gold beads and chain or other stringing material.

Included in the kit: supplies for 5 25mm beaded beads: 5 resin beads, 15/0 charlottes and bicone crystals.

Diane Fitzgerald - Beautiful Beads - 115 Hennepin Ave. - Minneapolis, MN 55401 - 612-333-0170
Email: dmfbeads@bitstream.net; website: www.dianefitzgerald.com

© 2009. This material may not be reproduced in whole or in part by any means without written permission of the author.