

The 2010 Bead Pal Project:

UK and US Beaders

The Bead Pal Project

September 1, 2009 to August 1, 2010



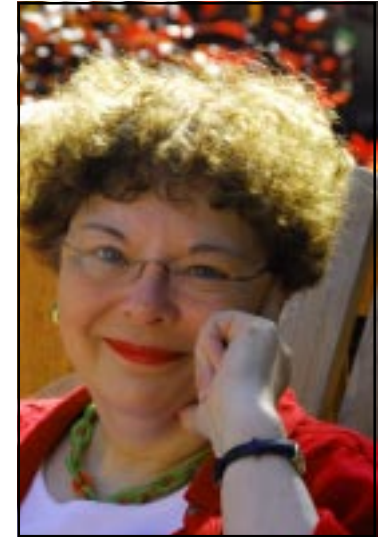
Stephney Hornblow

“Croft House’ The Green
Barton under Needwood
Staffordshire DE13 8JD UK
hornblow@btopenworld.com

The Project: British and US beaders were invited to join the project and each was paired with another beader. Beaders were encouraged to exchange photos and any other information they chose. Names, addresses and email addresses were distributed to all Bead Pals.

Each Bead Pal would make one beaded bead each month (approximately) and send it to her Bead Pal. The goal was to complete 12 beaded beads by August 1, 2010. Each bead must have at least two of the three following colors: Miyuki Delica 10 (black), 203 (cream) and 461 (copper). Beads should be no larger than 1 inch (2.5 cm) in any direction. Any beads in these three colors may be used to construct the beaded beads including cubes, triangles, seed beads, cylinder beads, pressed beads or wood beads. Finished beaded beads may be hollow self-supporting or may be beaded over a larger bead.

Comments: Although beaders were challenged by making the beaded beads, surprisingly, it was the assembly of the necklace that many said was the most challenging. Beaders struggled and analyzed and reassembled their beads until they found a pleasing solution that worked for them. Some joined beads into a pendant, others used the beads as dangles while others made two-strand necklaces or even used extra beads for a bracelet. Ann Gilbert planned to use hers for decorations on a tiny Christmas tree and Kathy Franke made hers for a stair railing decoration. In the end all agreed that the project was fun and that they were glad they did it.



Diane Fitzgerald

115 Hennepin Avenue
Minneapolis, Minnesota 55401 USA
dmfbeads@bitstream.net



Stephney Hornblow (Diane Fitzgerald)



Diane Fitzgerald (Stephney Hornblow)



*Jean Hall
(Susan Manchester)*



Jean Hall (Susan Manchester)



Susan Manchester/Jean Hall



Susan Manchester (Jean Hall)



Pat Johnson (Ann Gilbert)



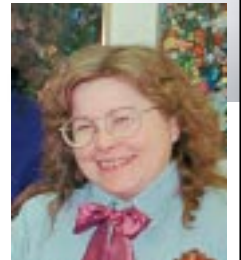
Ann Gilbert (Pat Johnson)



Mary Davis (Jane Langenback)

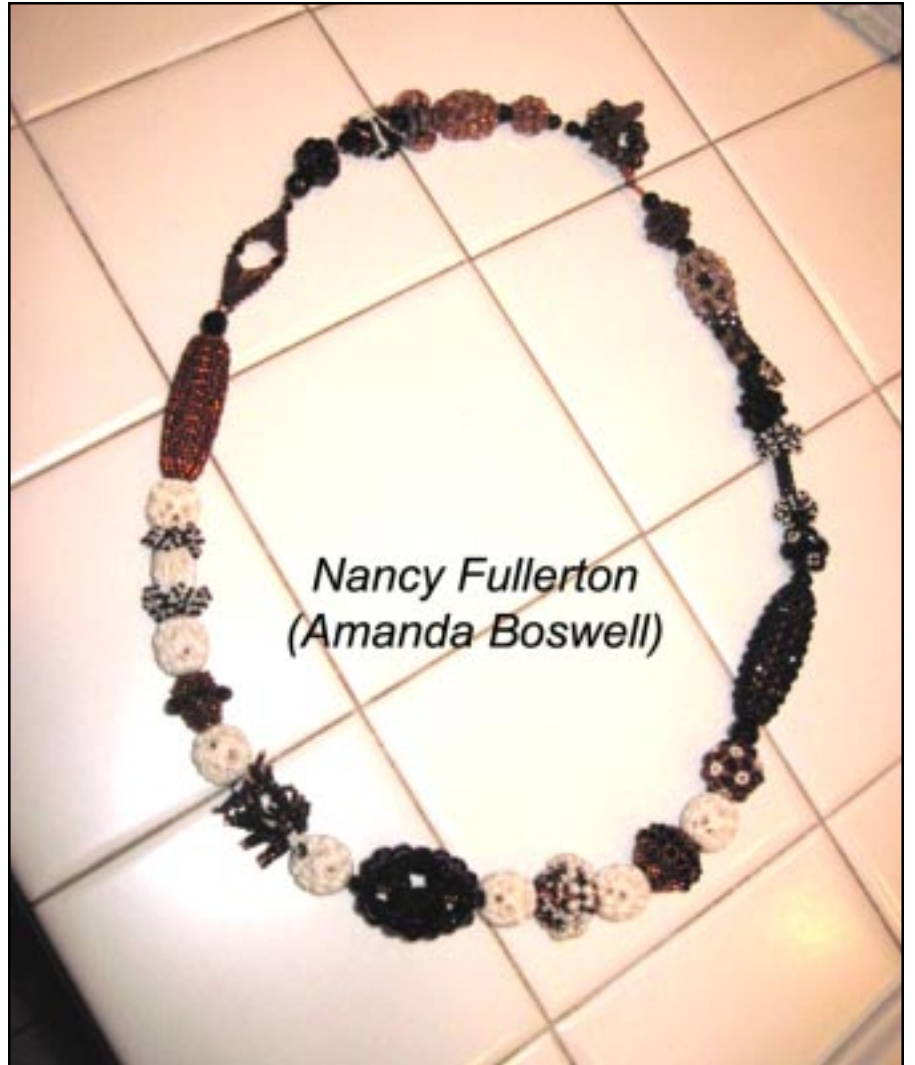


Jane Langenback (Mary Davis)





Amanda Boswell (Nancy Fullerton)

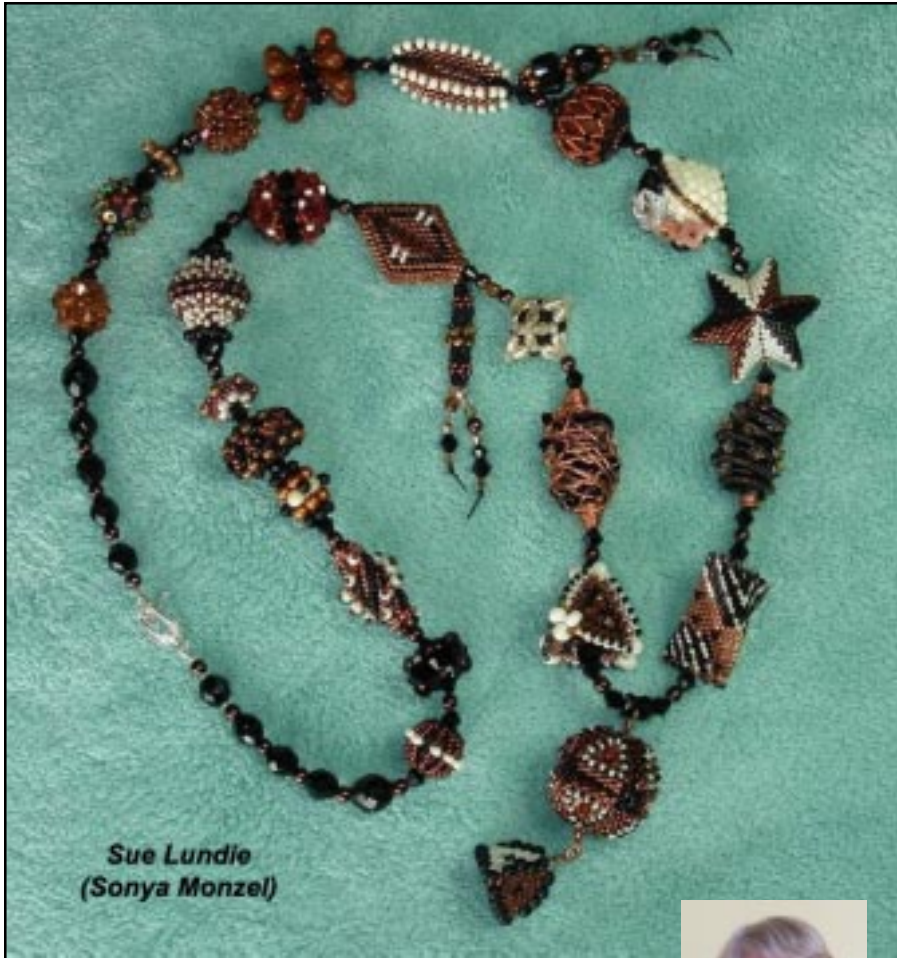


Nancy Fullerton
(Amanda Boswell)

Nancy Fullerton (Amanda Boswell)







Sue Lundie
(Sonya Monzel)



Sue Lundie (Sonya Monzel)



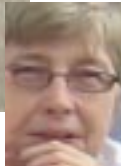
Sonya Monzel
(Sue Lundie)



Sonya Monzel (Sue Lundie)



*Hazel Arch
(Francie Broadie)*



Hazel Arch (Francie Broadie)



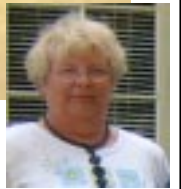
*Francie Broadie
(Hazel Arch)*



Francie Broadie (Hazel Arch)



Vicky Pritchard (Sandy Houk)



Sandy Houk
(Vicky Pritchard)

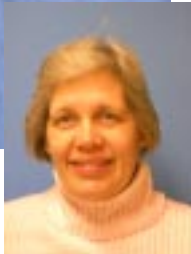
Sandy Houk (Vicky Pritchard)



Liz Wilson (Donna Kay Burdine)



Donna Kay Burdine (Liz Wilson)



Kathy Franke (Sandy Houk)



Sandy Houk (Kathy Franke)